



**JELD-WEN**  
WINDOWS & DOORS

## Wood Swinging Patio Door Active and Passive Keyed Handle Set Replacement (WODRI)

### IMPORTANT INFORMATION

**Note!** Please visit [www.jeld-wen.com](http://www.jeld-wen.com) for additional resources and complete instructions. We have How-To videos and written Product Guides available for most products. Contact us for more information.

### INCLUDED PARTS

- Complete handle trimset

### PRECAUTIONS AND SAFETY

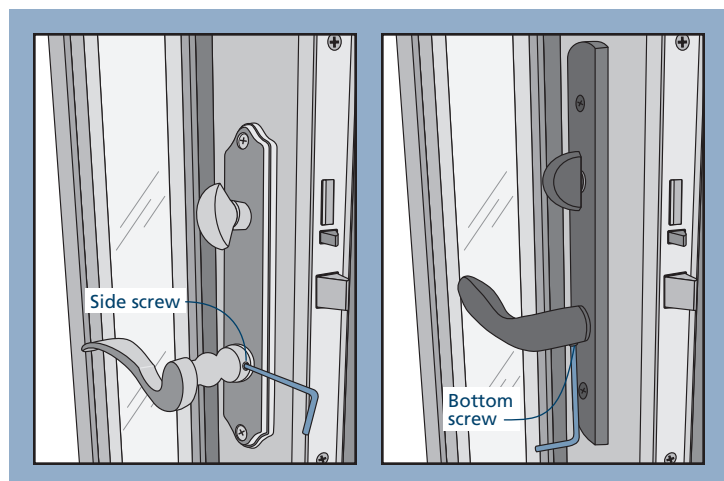
- Use proper and safe equipment and protective gear as necessary.

### NEEDED TOOLS

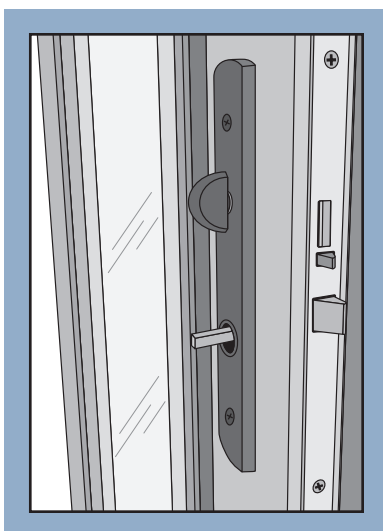
- Phillips head screwdriver

### SWINGING PATIO DOOR ACTIVE AND PASSIVE KEYED HANDLE SET REPLACEMENT

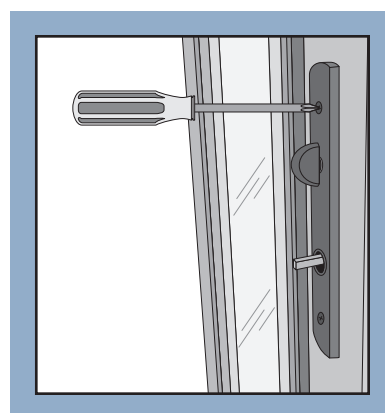
1. Loosen the set screws on both handles. Some are on the bottom and some are on the side.



2. Remove the handles.

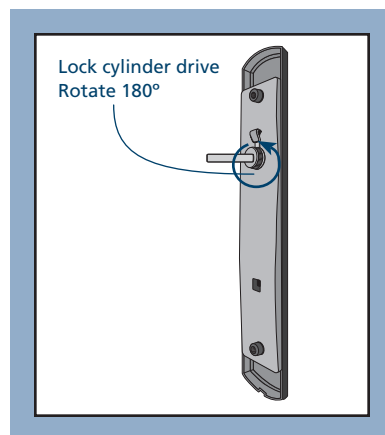


3. Remove the screws on the interior side and remove both exterior and interior escutcheon plates.
4. Install the replacement escutcheon plates on the door panel in the same orientation as the old set. Reinstall the handles and tighten the set screws.



#### Active handle sets only.

5. Test for proper operation. If the finger turn will not operate, remove the handles and the escutcheon plates and rotate the lock cylinder drive 180 degrees and reinstall.



The advice offered herein can be done by a homeowner with some mechanical aptitude. If you are unsure, it is recommended that you hire a trained service provider such as a competent and licensed construction contractor or building professional. JELD-WEN disclaims any and all liability associated with the use and/or provision of these instructions. Any reliance upon the information or advice is at the risk of the party so relying. The information contained herein may be changed from time to time without notification.